

COMPANY PROFILE

■ LAGOS OFFICE
7A CAPTAIN OLAJIDE GEORGE
STREET, LEKKI PHASE 1, LAGOS
STATE, NIGERIA

■ HEAD OFFICE:
18, JERUSALEM CRESCENT
OFF FARM ROAD 2,
ELIOZU, PORT HARCOUT,
RIVERS STATE, NIGERIA
+2348033053202, +2348037074304
dosmarkengineering@gmail.com
Website: dosmarkengineering.com



DOSMARK ENGINEERING LTD.

Engineering Consultancy / Services

EXECUTIVE SUMMARY

Dosmark Engineering Ltd is an indigenous contracting firm specializing in a diverse range of engineering services. With expertise in Oil & Gas operations, environmental development projects, mechanical and civil engineering, and water-related engineering, we are committed to delivering high-quality solutions tailored to meet the needs of our clients.

Our focus on remediation and environmental cleanup services underscores our dedication to sustainable practices and environmental stewardship. By leveraging our technical knowledge and local insights, Dosmark Engineering Ltd aims to drive progress and innovation in the engineering sector, ensuring reliable and efficient service delivery across all projects.

Dosmark Engineering Ltd possesses extensive expertise in entrepreneurship development, leadership training, business incubation, growth strategies, asset management, and consultancy services for small and medium-sized enterprises in the information technology and agro-based sectors. Our primary objective is to deliver high-quality, comprehensive engineering solutions across multiple sectors, including oil and gas and environmental development, by leveraging our expertise in drilling, construction, Mechanical and chemical applications. We aim to provide innovative, reliable, and cost-effective solutions that meet the diverse needs of our clients while ensuring safety and environmental sustainability.

INTRODUCTION

Dosmark Engineering Ltd was incorporated on February 27, 2009, as a limited liability company (Registration No. RC803929).

Our head office is situated at 18 Jerusalem Crescent, off Farm Road 2, Eliozu, Port Harcourt, Rivers State.

We employ over fifteen staff members, including engineers, architects, planners, technicians, and surveyors. In addition, we maintain partnerships with reputable engineering firms to ensure we can meet specific project requirements as needed.

Our drilling fluids / Completion and chemical department aims to be a leading provider of total solutions for drilling and oil production environments. We are dedicated to developing products that meet client requirements, supplying highquality and environmentally friendly chemicals at competitive prices, and optimizing drilling fluids / Completion operation.

Our team is committed to strengthening our position in the civil, mechanical, and environmental engineering sectors, as well as in infrastructural development. We bring significant expertise and technical capabilities within the construction and building industry.

Additionally, equipped with a 1000hp mechanized rotary rig, a 40-ton military semi-automatic pulling winch, and a 40ft self-loading Mars, Dosmark Engineering specializes in hydrogeology and water engineering. Our goal is to provide professional borehole drilling services and comprehensive investigations and management of surface and groundwater resources, effectively addressing the growing water needs in our communities.



OUR MISSION

Delivering workmanship to the best of International standard and contributing to the growth of the nation's greatness.

OUR VISION

Our vision is to be one of the foremost Engineering/Consultancy firm in Nigeria,

DIRECTORS

Engr. Stephen C. Onyegbula (Nigerian), Ogechi Gab-Anukam (Nigerian), Chijioke C. Onyegbula (Nigerian),
Chiedoziem S. Onyegbula (Nigerian), Miracle C. Onyegbula (Nigerian)



We believe strongly that our values are our company's engine room. We won't go anywhere without them....

OUR CORE VALUES

EXCELLENCE

To adhere strictly to national and international codes, values and Standards. Compliance with safety regulation, maintenance of cordial relationship in the execution of our jobs.

INTEGRITY

To develop a unique capacity to deliver professional and technical services to Clients, built on the broad

INNOVATION

Improvement/updates of the operational technique and activities required for the fulfillment of the quality management requirement.

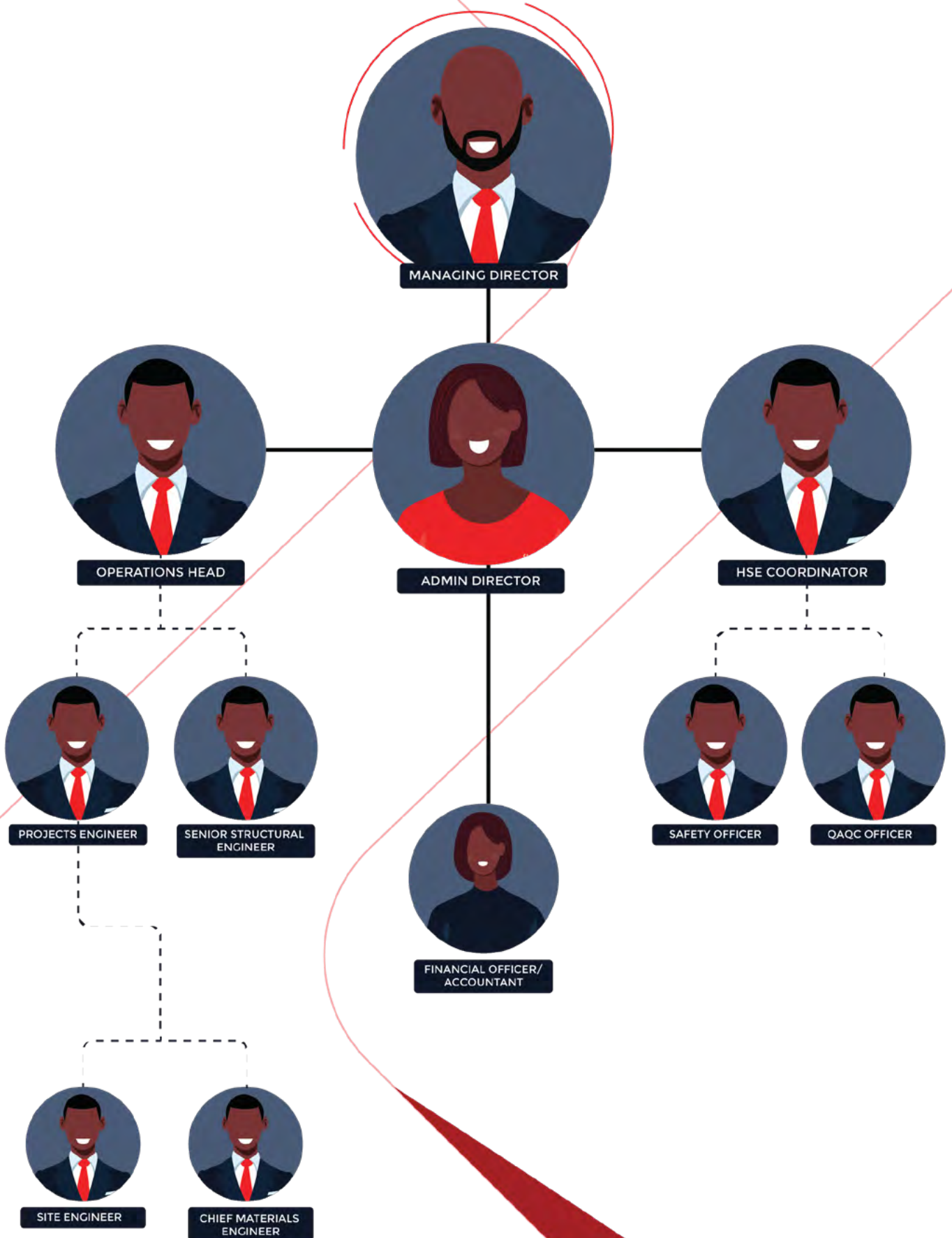
DISCIPLINE

To meet the special needs of Clients, we focus our skills, experience and local delivery on integrated, best value solutions.

DIRECTORS

Engr. Stephen C. Onyegbula (Nigerian), Ogechi Gab-Anukam (Nigerian), Chijioko C. Onyegbula (Nigerian), Chiedoziem S. Onyegbula (Nigerian), Miracle C. Onyegbula (Nigerian)

COMPANY ORGANOGRAM



DIRECTORS

Engr. Stephen C. Onyegbula (Nigerian), Ogechi Gab-Anukam (Nigerian), Chijioke C. Onyegbula (Nigerian), Chiedoziem S. Onyegbula (Nigerian), Miracle C. Onyegbula (Nigerian)

TOP MANAGEMENT TEAM



ENGR. STEPHEN CHIBUZOR ONYEGBULA

CEO, DOSMARK ENGINEERING LIMITED.

Stephen Chibuzor Onyegbula is a seasoned Drilling Fluids Engineer with over 23 years of extensive experience in land, swamp, and offshore / deep-offshore projects across Nigeria and Congo. He possesses a strong background in solid control, waste management, and wellbore cleanup tool and completion brine filtration engineering.

Throughout his career, Stephen has demonstrated effective leadership in worker supervision, inventory control, and cost management. He has held various roles, including co-plant supervisor at a mud plant, project coordinator, and drilling fluid, solid control, and waste management supervisor for Addax Petroleum Nigeria. Subsequently, he served as the drilling fluid and solid control advisor for Seplat Petroleum Development Company, and later as a supervisor for AMNI International Petroleum Development. He also provided fluid advisory services for Oriental Energy Resources Limited.

As the current CEO of Dosmark Engineering Limited, Stephen is a results-oriented, self-driven team player who thrives under pressure and consistently meets targets. Stephen holds a Bachelor of Engineering (B.Eng) degree in Petroleum Engineering from the University of Port Harcourt. He earned a Professional Diploma in Drilling Fluid Engineering from the MISWACO Research and Development Center in Houston, Texas, and an Advanced Diploma in DeepWater Drilling Fluid Technology from the same institution in Cape Town, South Africa. He has participated in various professional leadership and safety-training programs, including helicopter underwater escape training, basic offshore survival firefighting, and safety leadership workshops.

Stephen is a professional member of the Society of Petroleum Engineers (SPE) International and an elected member of the Nigeria Society of Engineers (MNSE No: 42866). He is also a registered engineer with the Council for the Regulation of Engineering in Nigeria (COREN). Among his notable achievements is his role in the first AKPO campaign, where he was part of the team that successfully drilled 18 wells for TOTAL Nigeria without hole issues or non-productive time. He also contributed to the ExxonMobil offshore drilling campaign, where he showcased his expertise in drilling over 15 wells under MISWACO's supervision.

TOP MANAGEMENT TEAM

CHIJOIKE CHIDIMMA ONYEGBULA

ADMIN/FINANCIAL DIRECTOR, DOSMARK ENGINEERING

Chijioke Chidimma Onyegbula serves as the Admin / Financial Director of Dosmark Engineering Limited, bringing over 19 years of extensive experience in banking, customer service, financial facility structuring, and human resources management. Her expertise extends to supply chain management, where she has developed a strong reputation for optimizing processes and enhancing operational efficiency.

Chijioke holds a Bachelor of Science (B.Sc) degree in Geology and Mining from Enugu State University of Science and Technology (ESUT). While advancing her career, she furthered her education with a Master of Science (MSc) in Operations and Supply Chain Management from the University of Liverpool, UK, equipping her with cutting-edge knowledge and insights. Her dual expertise in banking and supply chain management has been instrumental in enhancing the company's financial strategies and ensuring the successful delivery of projects within budget.

Chijioke's strategic vision and analytical skills enable Dosmark Engineering Limited to navigate complex financial landscapes while maintaining strong customer relationships and operational excellence. Her commitment to fostering a culture of efficiency and accountability positions the company for sustained growth and success in the competitive engineering sector.

ENGINEER SALIFU SAMSON

OPERATIONAL HEAD, DOSMARK ENGINEERING LIMITED

Engr. Salifu Samson is the Operational Head of Dosmark Engineering Limited, bringing over 28 years of extensive experience in Electrical and Electronics Engineering. His career began with the Standards Organization of Nigeria, where he spent over five years (1996-2001) ensuring the safety and compliance of electrical and electronic products through rigorous testing and certification processes, as well as contributing to laboratory accreditation and testing standards.

Following this foundational role, Salifu joined Energy Consulting Associates Limited for a year, focusing on the rehabilitation of numerous NEPA 132/33KV substations between 2001 and 2002. His expertise further expanded during his tenure at the Consortium of RSW International and Technology and Management Consulting Limited, where he participated in the design, construction, and supervision of high-voltage single-circuit transmission lines and associated substations from 2002 to 2004.

TOP MANAGEMENT TEAM

From 2004 to 2006, he continued his work in this domain with IPC/Coplan Associates, honing his skills in project management and execution. His career took a significant turn at Lahmeyer International/O.T. OTIS Engineering (Consortium), where from June 2006 to May 2010, he assumed a pivotal role in telecommunications, integrating his expertise in transmission lines and substations.

Salifu holds a Master of Science (MSc) degree in Electrical Engineering from the University of Lagos. He is a Registered Engineer with the Council for the Regulation of Engineering in Nigeria (COREN), an elected member of the Nigerian Society of Engineers (NSE), and an Accredited Laboratory Assessor. He is also an Associate of the Institute of Appraisers and Cost Engineers and a member of the Nigerian Institute of Management.

His professional development includes numerous specialized trainings, both domestically and internationally, covering topics such as Fiber Optics Systems, Synchronous Digital Hierarchy (SDH), Microwave and Telephone Systems, Tele-protection Systems, and Risk Assessment and Management. He has also gained valuable expertise in contract management, procurement, and security protocols for construction sites. Salifu's hands-on experience includes witnessing factory acceptance tests for substation automated systems, control and protection panels, fiber optic cables, line traps, matching units, SDH equipment, and PABX systems. His comprehensive background and dedication to excellence make him an invaluable asset to Dosmark Engineering Limited, driving operational success and innovation in the engineering sector.

NWARGOR HENSHAW CHIMA

HSE COORDINATOR, DOSMARK ENGINEERING LIMITED

Nwargor Henshaw Chima is the HSE Coordinator at Dosmark Engineering Limited, bringing over 23 years of specialized experience in engineering and security management. Hailing from Umuoforuru-Ozuzu in the Etche Local Government Area of Rivers State, Henshaw has built a commendable career focused on enhancing health, safety, and environmental practices within the industry.

Henshaw's professional journey includes significant contributions while working with NISCO Nigeria Limited on the OSO 2Y2 hookup offshore project, where he played a pivotal role in ensuring safe access and movement during offshore operations. He further developed his expertise as an HSE Facilitator with PAEFE-SPDC in Port Harcourt, conducting site inspections to certify safety standards in field engineering operations. His specialized knowledge was further exemplified during his tenure as HSE Coordinator with P&G Safe-Tech Contractor to Saipem Nigeria Limited, where he successfully coordinated all departmental HSE activities and ensured compliance with the HSE Management System (HSE-MS).

TOP MANAGEMENT TEAM

Continuing to expand his skill set, Henshaw served as HSE Supervisor with EZZY “DU” Global Resources, overseeing surveillance and safety measures for SPDC pipeline operations. His extensive experience in HSE matters has equipped him to address and resolve various challenges related to health, safety, and environmental management. Henshaw holds a Bachelor of Education (B.Ed) degree from the University of Port Harcourt and has obtained a professional diploma in Safety Engineering and Security Management from Rivers State University of Science and Technology, Nkpolu, Port Harcourt. He has further enriched his knowledge through numerous specialized safety courses at Charkin Maritime Safety Centre and Rivers State University of Science and Technology.

He is an esteemed member of the Nigerian Institute of Safety Professionals (NISPP) with registration number RVSP BA 041 (graduate 3441). Henshaw has also attended various advanced training programs covering marine transportation safety, environmental safety, first aid management, emergency response, safety communication, and environmental impact assessment, among others.

With his dedication to fostering a culture of safety and compliance, Nwargor Henshaw Chima is an invaluable asset to Dosmark Engineering Limited, ensuring that health, safety, and environmental standards are met and continuously improved across all operations.

OUR SERVICES



ENGINEERING SERVICES



CONSTRUCTION (CIVIL & MECHANICAL) SERVICES



PROCUREMENT SERVICES



INSPECTION & MAINTENANCE SERVICES



PROJECT MANAGEMENT & SUPPORT



LOGISTICS & SUPPLY CHAIN MANAGEMENT



SECTORS WE WORK FOR

GOVERNMENT 	DEFENCE 	OIL & GAS 	EDUCATION
INDUSTRIAL & MANUFACTURING 	LEISURE & COMMERCIAL OFFICES 	SOCIAL HOUSING 	

DIRECTORS

Engr. Stephen C. Onyegbula (Nigerian), Ogechi Gab-Anukam (Nigerian), Chijioko C. Onyegbula (Nigerian), Chiedoziem S. Onyegbula (Nigerian), Miracle C. Onyegbula (Nigerian)

CRUDE OIL PRODUCTION CHEMICALS

Crude oil production frequently encounters challenges such as wax buildup in tubing and production pipelines, leading to significantly reduced flow rates. To combat this issue, companies often face costly shutdowns to treat or remove the wax, which disrupts optimal production levels. Oil and water separator additives are specialized chemical formulations

designed to enhance the efficiency of oil-water separation processes. In industries like oil and gas, wastewater treatment, and industrial cleaning, effective separation of oil from water is essential for environmental compliance and resource recovery. These additives modify the physical and chemical properties of the oil-water mixture, promoting the coalescence of oil droplets and facilitating their removal. By improving separation rates and reducing emulsion stability, oil and water separator additives help achieve cleaner effluents and optimize operational efficiency.

As regulations regarding oil discharge become increasingly stringent, the significance of these additives in ensuring effective separation and minimizing environmental impact cannot be overstated. In response to these challenges, Dosmark Engineering Limited, in collaboration with Barcopet Limited, is proud to introduce two innovative solutions: the Crude Oil Wax Remediation Chemical (PRA) and Oil and Water Separator Additives (OWS). These products are designed to enhance production efficiency and support sustainable practices in the oil and gas industry.



DRILLING FLUIDS

We provide comprehensive consulting solutions in the following areas:

Drilling fluids engineering: Expert guidance on the design and optimization of drilling fluid systems tailored to specific project requirements.

Drilling fluids formulation: Custom formulation of drilling fluids to enhance performance and efficiency in various drilling environments.

Quality Assurance: Verification and confirmation of the quality and effectiveness of drilling fluid products to ensure they meet industry standards and project specifications.

Solid Control Engineering: This field focuses on the management and separation of solid particles from drilling fluids. It involves designing and optimizing systems such as shale shakers, centrifuges, vertical dryers and desanders to efficiently remove solids from drilling fluids, wastewater, or other liquid processes, ensuring operational efficiency and compliance with environmental standards.

Drill Cuttings Waste Management Engineering: This area involves the planning, design, and implementation of systems for the effective handling and disposal of drill cuttings waste materials. It encompasses various aspects such as waste collection, treatment and disposal, aiming to minimize environmental impact, enhance resource recovery, and ensure regulatory compliance. This field is crucial for developing sustainable practices and managing drill cutting waste in oil well drilling.

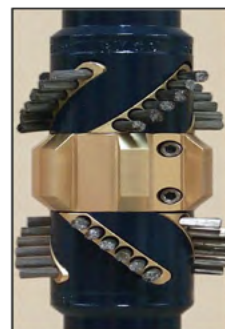
WELLBORE CLEAN-UP TOOLS IN DRILLING OPERATIONS

Casing Scraper: The casing scraper is a tool designed to remove debris, scale, and other obstructions from the interior surface of the casing. It features sharp blades or scraping elements that effectively clean the casing, ensuring optimal wellbore conditions for subsequent operations such as cementing or completion.



Brush Tool : The brush tool is used to clean the wellbore by brushing away mud, debris, and other contaminants that may hinder drilling or production activities. Equipped with bristles made from durable materials, it effectively scours the walls of the wellbore, promoting better fluid flow and enhancing the overall efficiency of drilling operations.

12



WELLBORE CLEAN-UP

Magnet Tool : The magnet tool is utilized to capture ferrous debris and metal particles that can accumulate in the wellbore during drilling. By attracting and holding these contaminants, the magnet tool helps maintain the integrity of the drilling process and prevents damage to down-hole equipment, thereby improving operational safety and efficiency



Waste Retriever Tool : The waste retriever tool is designed to collect and remove solid waste and debris from the wellbore. This tool can retrieve a variety of materials, including lost circulation materials and other non-conductive elements, ensuring a cleaner wellbore environment. Effective use of the waste retriever tool helps reduce the risk of wellbore instability and enhances the overall success of drilling operations.



BRINE FILTRATION UNIT

Filter Presses : Our Twin Filter offers heavy duty FILTER PRESSES for onshore and offshore use. Our Filter Presses are specially designed for completion, work over and gravel pack fluids filtration.

The Filter Press can be supplied as a combination unit with a slurry skid, pump skid, powder dosing system and/or duplex cartridge unit and all necessary auxiliaries to run an efficient filtration job.



Diesel Driven Pump Skid: Our Twin Filter designs and manufactures diesel driven Pump Skids especially engineered for oilfield applications. The pump can be used as feed pump to our filtration units.

The diesel driven pump is built in an offshore proof DNV certified frame including manual dry clutch, day tank, forklift pockets, lifting slings, drip pan and motor protection guard. The unit is designed for easy and reliable operation and requires minimum maintenance.



FILTRATION UNITS

Skid Slurry : To operate a Filter Press you need a SLURRY SKID. Our Twin Filter can offer you two options; a single unit or a double unit. The single unit is the most economical option however the double unit offers several extra features and benefits. The two individual compartments of the double Slurry Skid unit operate separately using one compartment for pre coat and one for dosage. This allows easier operation and switch over and provides the possibility to operate two Filter Presses with one double unit, resulting in minimal down time. For environmental and health reasons we offer our power dosing system for adding the Twinlite (DE material).



DRILLING FLUIDS /PRODUCTION CHEMICALS LABORATORY SERVICES

Delivering solutions that improve customers' performance is at the center of who we are. Specifically in the area of Drilling Fluids Auditing, Production chemicals laboratory services and Mud Laboratory testing services by providing excellent Chemicals engineering Laboratory and support services.



OUR LAB



HAMILTON BEACH MIXERS AND MBT KIT





WATERBATHS AND Le CHATELIER'S FLASKS FOR BARITE ANALYSIS

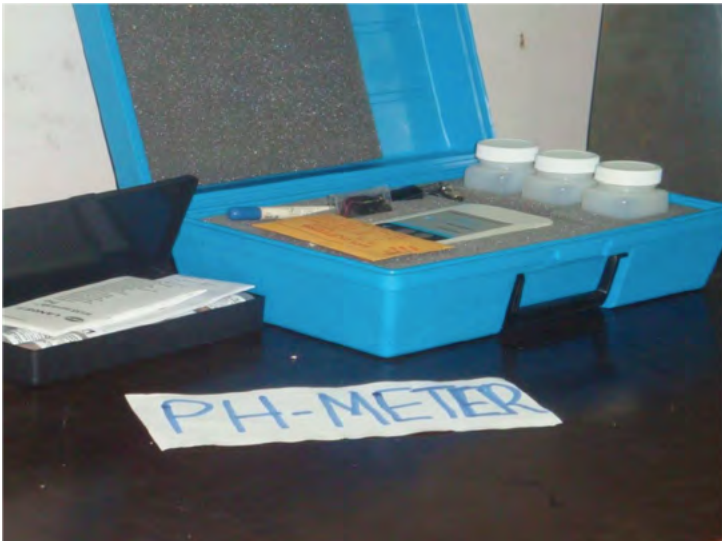


PRESSURE AREA



IRON TEST KIT, TURBIDITY METER AND MAGNETIC STIRER

HYDROMETER SET



**LAB
SERVICES**





OUR PROJECT MANAGEMENT SERVICES

To meet the special needs of existing and prospective clients, we focus our skills, experience and delivery on integrated, best value solutions to various types of Project Management Services with unrivalled breadth of expertise to match the scope of our skills and services in any project.

Technical and administrative excellence is the starting point for what we provides, combined with proven ability to manage cost effectively.

With the capacity to tackle every type of commission from small-scale to major projects we have the unique capacity to deliver professional and technical services to clients built on the broad skill base of our staff. In view of the foregoing statements, our policy is to:

- 1. Make workplace free from recognized and unrecognized hazards that are likely to cause death, injury, illness, damage to property and environments.*
- 2. Recognize the priority of safety, health and environmental factors where there is competition with economic considerations.*

DIRECTORS

Engr. Stephen C. Onyegbula (Nigerian), Ogechi Gab-Anukam (Nigerian), Chijioko C. Onyegbula (Nigerian),
Chiedoziem S. Onyegbula (Nigerian), Miracle C. Onyegbula (Nigerian)



OUR PROJECT MANAGEMENT SERVICES

3. *Maintain Professional Staff to develop and Monitor HSEs Program.*
4. *Train Employees in safe practices and procedures.*
5. *Hold each superior accountable for ensuring that the employees, equipments and facilities within their areas of responsibility of complying with this policy.*
6. *Hold each employee responsible for maintaining his/her work areas and work practices in compliance with this policy.*
7. *Provide necessary incentives for all employees to promote safety acts.*
8. *Minimize the impact on the environment in which we operate.*
9. *Identifying and eliminating health risk associated with work conditions.*
- 10.. *Promote a structured program of health education amongst employees.*
11. *Ensuring that all staff is fit to undertake their duties through pre-employment and periodic medical examinations.*
- 12 *Maintaining retainership with competent industrials hospital for the purpose of providing health treatment services to staff.*
13. *Observing all other health related policies.*

DIRECTORS

Engr. Stephen C. Onyegbula (Nigerian), Ogechi Gab-Anukam (Nigerian), Chijioko C. Onyegbula (Nigerian),
Chiedoziem S. Onyegbula (Nigerian), Miracle C. Onyegbula (Nigerian)



QUALITY ASSURANCE & QUALITY CONTROL POLICY

Plan, procure, inspect, test, document and conduct all activities and facilities that are concerned with the attainment of quality.

To implement, operate and maintain quality assurance system in compliance with the requirement of B.S 5750 Pt 11S 09001 and other International orders.

Not to sacrifice quality in order to meet unreasonable time schedule or target.

To fully implement non-conformance report (NCR) and corrective action report (CAR) for close out.

Adhere to our client's quality standard in execution of all projects.

To supply accurate data and information for audit.

DIRECTORS

Engr. Stephen C. Onyegbula (Nigerian), Ogechi Gab-Anukam (Nigerian), Chijioke C. Onyegbula (Nigerian), Chiedoziem S. Onyegbula (Nigerian), Miracle C. Onyegbula (Nigerian)

HEALTH SAFETY ENVIRONMENT & SECURITY (HSES) POLICY

With due regard to the health, safety and security of DEL staff, client and general public/property/equipment and the protection of the environment where we operate, the following safety procures as been designed to guide the conduct of our staff/ client in order to reach our set goals on time and on budget:

1. Movements of vehicles in and out of the premises shall be with use of seat belt. However, all visitors are to park their vehicles at the visitor's car park.
2. Clients/visitor entering the premises are to go through our routine security check/documentation after which they will be issued a permit (Tags), which shall cover all aspect of activities throughout the period. The used/display of tags are mandatory for all classes of persons.
3. All persons working in the premises must the appropriate personal protective equipment (PPE) and also observe all safety rules/signs in places such as: Use of hardhats (Helmet), coverall, hand gloves, safety boots, safety bells on heights and other PPE as is most appropriate. Signs such as barricading or hazards (danger) should be observed, while substance abuses, horseplay, sleeping, gambling or fighting have absolutely no place in the work environment.
4. Supervisory personnel shall be responsible for seeing that the men under their control follow all the corresponding safe work practices.
5. The HSE adviser monitors staff/contractor/clients work habits with a view to either highlight wrong work procedures or stop/suspend activities when they are considered unsafe.

DIRECTORS

Engr. Stephen C. Onyegbula (Nigerian), Ogechi Gab-Anukam (Nigerian), Chijioke C. Onyegbula (Nigerian),
Chiedoziem S. Onyegbula (Nigerian), Miracle C. Onyegbula (Nigerian)

HEALTH SAFETY ENVIRONMENT & SECURITY (HSES) POLICY



6. Staff/clients are advised to report any unsafe acts and/or unsafe conditions noticed to the HSE department.

7. Eliminate all chances of fire emanating from sources such as electrical default, sabotage, friction, sparks, smoking etc.

8. In the event of emergency situation(s), all persons inside the premises are advised to observe the following:

- Stop work
- Shut down equipment
- Coverage at muster point (for head count)
- Take further instructions from authorized person.

9. Clients are advised to maintain a healthy working environment during or after job execution. Waste materials should be well disposed while effluents such as air, noise, hydrocarbons spill etc should be controlled.

10. All report on accident/incident is required for all levels of job for the purpose of available for sick/injured persons.

11. All persons (contractors, clients or visitors) inside the premises are expected to log off or sign out at the end of their activities with the security department.

12. The HSE department complies with relevant national and international laws and regulations on health, safety, environment, security and community affairs matters

13. Foster the promotion of harmony with host community.

14. Maintain an update of HSE records/statistics.

15. The HSE department ensures that all works or activities under their supervision directly or indirectly is carried out in accordance with this worksite HSE management plan and not compromise health, safety or any individual, or

DIRECTORS

Engr. Stephen C. Onyegbula (Nigerian), Ogechi Gab-Anukam (Nigerian), Chijioke C. Onyegbula (Nigerian),
Chiedoziem S. Onyegbula (Nigerian), Miracle C. Onyegbula (Nigerian)

OUR POLICIES

ENVIRONMENTAL & WASTE MANAGEMENT POLICY

At Dosmark Engineering Ltd we recognize that the by – products of our normal business activities, which could be hazardous, will likely have adverse effects on men, animals, plants and property.

Bearing this in mind, emphasis is laid on:
Studying about the likely hazardous product associated with our line of business activities.

- Carrying out inspections from time to time to properly record any physical environmental damages, searching out solution to prevent any likely future occurrence.
- We plan to collect all the machinery wastes in designated areas for recycling (waste oil to be used for wooden shutters).
- Carefully estimate the environmental hazard associated with our daily activities, and make every effort to minimize the depreciating aspect of such activities.
- Set up monitor and assessment machinery.

TRAINING POLICY

Management believes in training and retaining of both new and old staff. The aim is to be acquainted with the work process and the necessary skills and behavior required of them. Apart from safety training (Safety meetings/seminars, pre-job hazard analysis, emergency drills, etc), toolbox briefing, safety meetings are systems used to get safety messages across. In view of this, safety department conducts regular Health, Safety &

Environmental training aimed at enhancing the overall HSE-MS awareness and performance of work by staff. In addition the safety manager shall enlist assistance from sponsor department of our client in organizing and nominating personnel for such training, especially those organized by our client. Advance notification of such training shall be published and annual training schedule/ program stating the type of course, course objective, date and those eligible for those courses.

These courses are either handled in-house by our safety/ training manager and/or by our safety consultants (External Instructors). Training is scheduled such that operations are not disrupted.

OUR POLICIES

COMMUNITY AFFAIRS POLICY

Our operations/activities are always being carried out in foreign environment and we have always been guest of the inhabitants of these communities. In order to have a trouble-free environment, we shall institute a healthy working relationship with our host communities. It is therefore our policy to: -

- Respect cultural social/religious belief of host communities.
- In possible situations, involve such communities in the execution of the project by subletting the supplies of some of the materials needed for the job.
- Honor invitation to attend community festival, ceremonies and be punctual to attend meetings.
- In case of any communal disturbance, as quickly as possible Community Relation Officer (CLO) and Project Engineer should be informed of the situation by the site safety officer/foreman.
- The public relation officer (PRO) shall proceed immediately to the location to determine the grievance of the community with the aim of proffering solutions.
- To always use dialogue to resolve issues.
- Meet with community leaders to inform them of the project.
- Ensure health and safety of employed workforce and equipment during operations in such community.
- Assist host communities in specific areas within our resources.
- We shall endeavor to award minor contracts to competent sub-contractors from our host community

HIRED EQUIPMENT / VEHICLES POLICY

As a relatively company, may not have all the required equipment on ground. But we have leasing agreement with repeatable companies that make available any equipment we need for any particular job. (We attached a photocopy of such agreement). To ensure prompt delivery we have set a strict policy for all hired equipment such that: -

- The equipment must be in good working condition and to meet our client's standard.
- The owner must furnish us with maintenance schedule to ensure smooth operations.
- The operators/drivers must be qualified, fully equipped with appropriate PPE and observe all our policies strictly.

SNIPPETS FROM OUR PROJECT GALLERY



Construction of Internal Roads of Ikot Ekpene
Medium Prisons [drainages], Akwa Ibom State.



Construction of Uyo township roads [drainages],
Akwa Ibom State.

DIRECTORS

Engr. Stephen C. Onyegbula (Nigerian), Ogechi Gab-Anukam (Nigerian), Chijioke C. Onyegbula (Nigerian),
Chiedoziem S. Onyegbula (Nigerian), Miracle C. Onyegbula (Nigerian)

SNIPPETS FROM OUR PROJECT GALLERY



Construction of Solar Boreholes And Renovation of Reservoir, Adamawa State.

DIRECTORS

Engr. Stephen C. Onyegbula (Nigerian), Ogechi Gab-Anukam (Nigerian), Chijioko C. Onyegbula (Nigerian), Chiedoziem S. Onyegbula (Nigerian), Miracle C. Onyegbula (Nigerian)

SNIPPETS FROM OUR PROJECT GALLERY

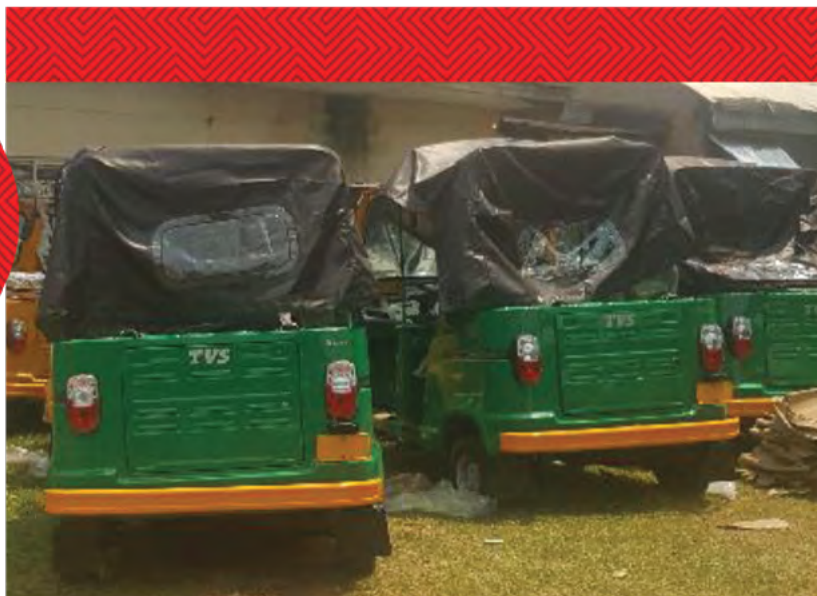


Construction of water Borhole at
Ubaru-Igbariam Community
in Anambra East LGA of Anambra State
(EU-UNICEF Water Supply
and Sanitation Sector Reform Programme-II
(WSSSRP-2PHASE-3 lot 26)

DIRECTORS

Engr. Stephen C. Onyegbula (Nigerian), Ogechi Gab-Anukam (Nigerian), Chijioko C. Onyegbula (Nigerian),
Chiedoziem S. Onyegbula (Nigerian), Miracle C. Onyegbula (Nigerian)

SNIPPETS FROM OUR PROJECT GALLERY



Provision of Tricycles for 75
unemployed youths
in Akpabuyo LGA Cross River
state [Ministry of Niger Delta
Affairs]



DIRECTORS

Engr. Stephen C. Onyegbula (Nigerian), Ogechi Gab-Anukam (Nigerian), Chijioko C. Onyegbula (Nigerian),
Chiedoziem S. Onyegbula (Nigerian), Miracle C. Onyegbula (Nigerian)



Provision of extensive AGRO- BASED Training Programs with starter packs for 52 unemployed persons and youths in Edo South Senatorial District (Fishery Production Option) [Ministry of Niger Delta Affairs]



Youth and women training and empowerment in Agricultural enterprises for 450 participants in the Niger Delta region (Poultry Option) for 40 persons, [Ministry of Niger Delta Affairs]

D I R E C T O R S

Engr. Stephen C. Onyegbula (Nigerian), Ogechi Gab-Anukam (Nigerian), Chijioko C. Onyegbula (Nigerian), Chiedoziem S. Onyegbula (Nigerian), Miracle C. Onyegbula (Nigerian)